



# CORPORATE PROFILE

東亜建設工業  
TOA CORPORATION

*Creating Value,  
Leading the Future &  
Fulfilling Our Mission  
to Benefit Society*



# TOA THROUGH THE YEARS

The history of TOA Corporation stretches back to 1908 and since then, TOA has been pioneering on offshore engineering works. Through the years, TOA expanded to cover terrestrial engineering and perform any other construction projects which spread widely in Japan and later on in overseas areas. Through the company's International General Headquarters, TOA was able to progress its construction expertise and continues to contribute to the sustainable development of Asian regions, Middle East, Africa, Oceania and more areas of the world.

- 1908 ● Founded
- 1920 ● Established "Tokyo Bay Marine Works Co., Ltd."
- 1963 ● Opened International HQ & Singapore Office
- 1967 ● Opened Indonesia Office
- 1987 ● Changed English name from "TOA Harbour Works Co., Ltd." to "TOA CORPORATION"
- 1995 ● Opened Philippine Office
- 1996 ● Opened Vietnam Office
- 2006 ● Opened UAE Office
- 2008 ● Celebrated 100 years Anniversary
- 2013 ● Celebrated 50 years Anniversary of International Division, Opened Kuwait Office
- 2020 ● Opened Bangladesh Office

## WE ARE THE RESULT OF OUR HARD WORK

### THE KEY FIGURES (As of May 2024)

**54** COUNTRIES **582** PROJECTS

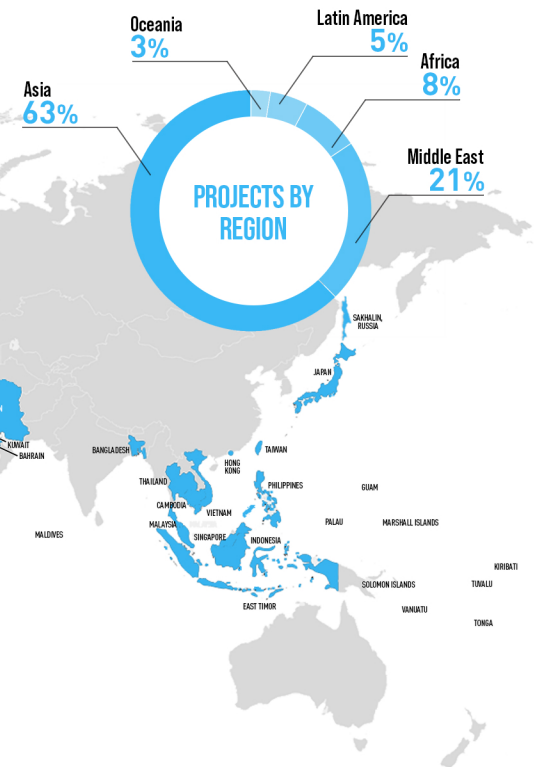


**Katsuhisa KIMURA**

Director and Managing Executive Officer  
Chief of International General Headquarters

“

We will continue to reform our business structure to realize our long-term vision of **TOA 2030** and we will give more serious consideration to SDGs and carbon neutral initiatives in our overseas operations.

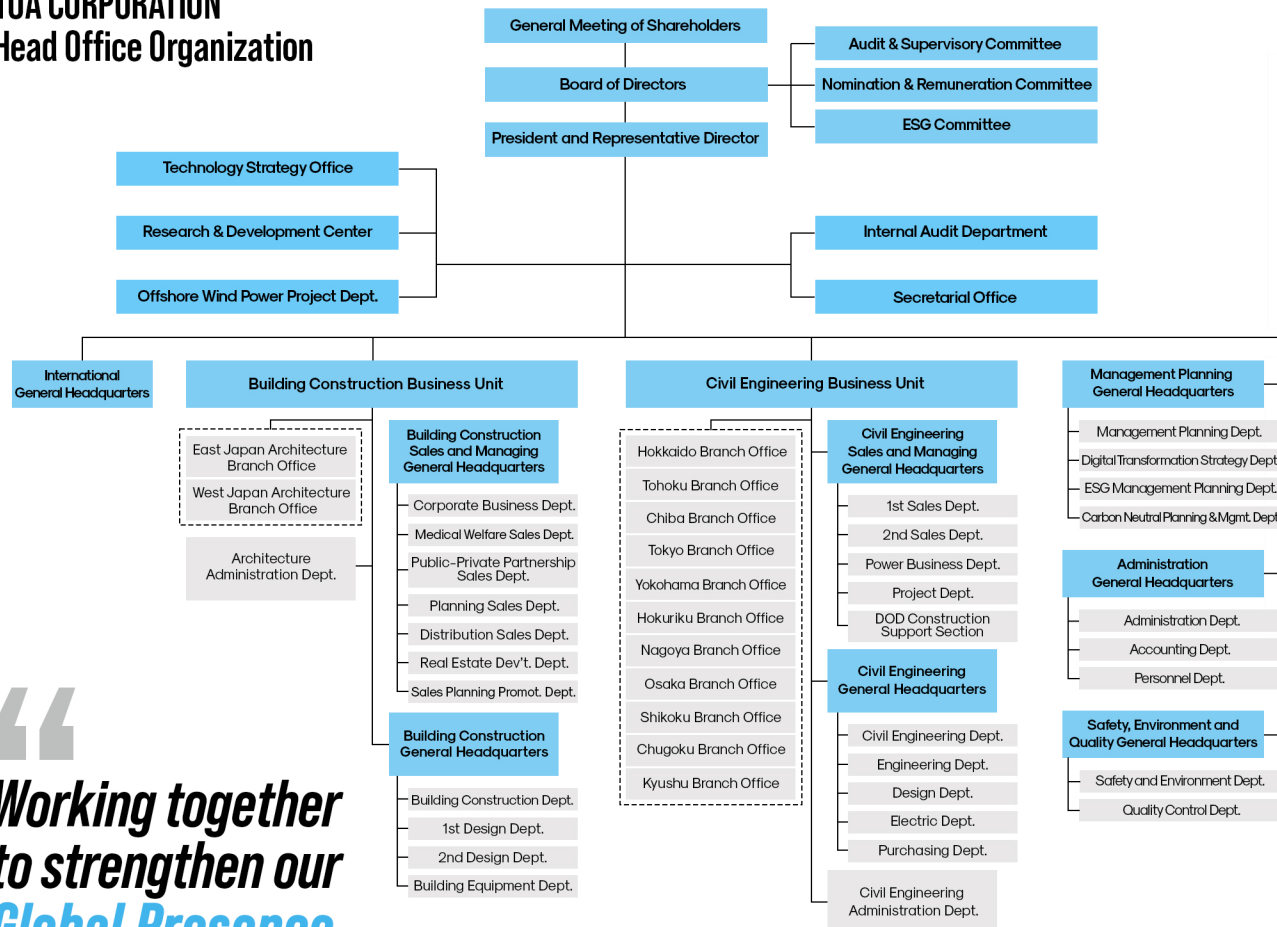




# OUR INTERNATIONAL GENERAL HEADQUARTERS ORGANIZATION

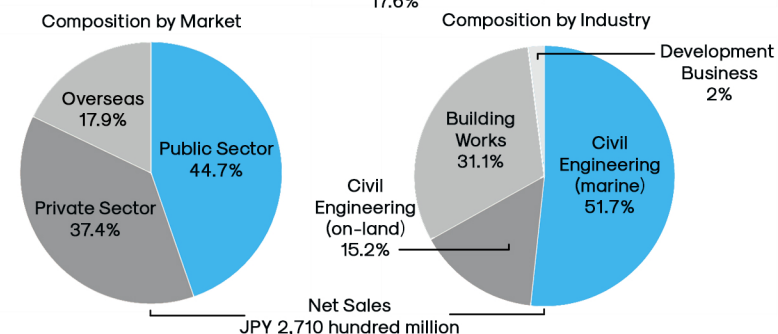
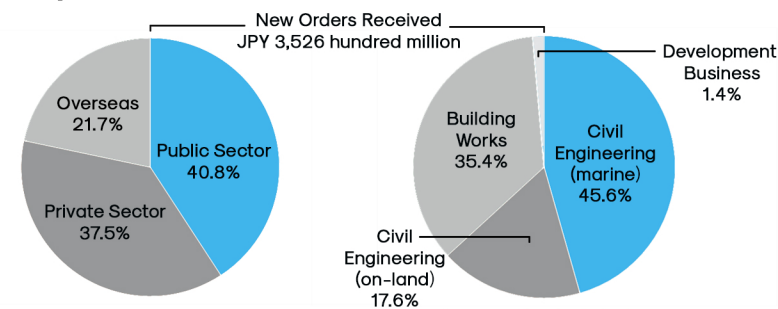


## TOA CORPORATION Head Office Organization

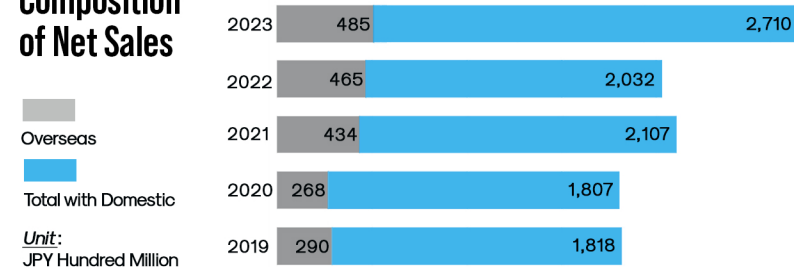


“  
Working together  
to strengthen our  
Global Presence

## Composition of New Orders Received and Net Sales for 2023



## Composition of Net Sales





# OUR *ESG* INITIATIVES



We fulfill our social responsibilities and carry forward **ESG Management** to practice sustainable improvements in corporate work, and thereby contribute to **Sustainable Development Goals.**

## ENVIRONMENT EFFORTS

*Realizing the sustainable natural environment by reducing the burden on the environment.*

### TOA's Nature Restoration Technology for Sustainability

**The goal of TOA's nature restoration technology is to conserve, restore, and create the natural environment.**

Because of the significant burden caused by the socio-economic activities, biodiversity is decreasing and ecosystems are declining. As such, it is imperative to create a society that coexists with nature. The knowledge we have gained from



working with the ocean over the years is a significant part of our work on sustainability. Our desire to share the ocean's bounty with all living creatures, has driven us to practice natural restoration technology. As part of our sustainable development, we transplanted 402 corals during the construction of Port Vila Lapetasi Project to minimize the construction's impact on coral reefs. With the approval and close coordination with the Vanuatu Fisheries Department, we had our experienced local divers who completed the transplantation, making sure to still meet the construction schedule without compromising safe transfer of the corals. This contributed to the conservation of ecosystems in light of the rising sea temperatures that are threatening coral habitats around the world.



### Shaping the Future with Wood: TOA Research and Development's Woodification Project

As part of our initiatives to reduce CO2 emissions, woodification of medium and large-scale buildings is garnering significant attention. We have undertaken an innovative project to transform our TOA Research and Development Center's Building 2 into a wood-based structure. Through these efforts, our wood-based buildings not only contribute to environmental preservation but also to society by offering spaces that enhance comfort and customer satisfaction.





## Top-notch TOA Corporation Engineers Honored with Prestigious Awards



### The MLIT Minister's Prize and Encouragement Award

Two of our employees, who were engaged in the "Project for the Rehabilitation of the Third Wharf in Dakar Port" the 2023 Minister's Prize" and the "Encouragement Award" from Minister of Land, Infrastructure, Transport and Tourism for their outstanding performance and dedicated efforts for an overseas project.

## Promoting English as an Official Language

The International General Headquarters has designated English as an essential tool for business operations, and has been working to promote English as the official work-setting language since 2020. In addition to providing employees with English learning tools, we also use English at meetings involving foreign employees and in written communication such as e-mail. We also provide Japanese-learning tools for foreign employees and promote Japanese-style business-manner courses. As of April 2024, there are over 20 foreign employees of various nationalities working in the International General Headquarters, and they have been dispatched to various overseas projects.

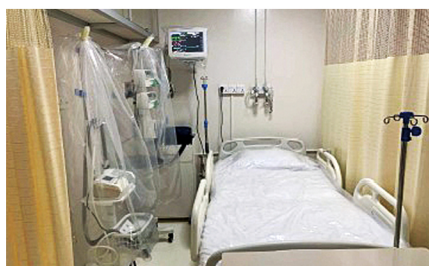
## TOA Singapore - 60 Years of Diverse Workforce

The Singapore office of TOA celebrates a significant milestone as they mark their 60th founding anniversary last December 08 2023. This serves as a momentous occasion to reflect on the achievements and growth, the office has experienced over its six decades of operation. Through this celebratory event, the company aimed to strengthen the bond with its diverse workforce, fostering a sense of togetherness and shared accomplishments.



# GOVERNANCE EFFORTS

*Making continuous trust with society and employees.*



## Risk Management for Expatriates in the Corona Disaster

In 2020, due to COVID-19, construction work was suspended in many countries. We prioritized employee safety and updated our emergency response, and after assessing each country's restrictions and conditions, we successfully resumed construction work in most countries during the latter half of fiscal 2020. Since then, we've partnered with overseas security and medical assistance companies for emergency transport arrangements. In some countries, we procured ICU equipment for our partner hospitals to ensure readily available beds and protect our employees' health and welfare.

## Enhancing Resilience by Developing our Business Continuity Plans (BCP)

A"V2X (Vehicle to X) EV (electric vehicle) charging and discharging device" was installed in the visitor's parking lot at our Technology Research and Development Center (TRDC). This will allow the power stored in the batteries of electric vehicles to be supplied to the main building of TRDC, allowing for speedy recovery to address potential power outage in the event of natural disasters, and for strengthening our BCP measures. Based on our long-term vision, it is our aim to continue developing our efforts to create 100% energy-generating facilities.



## Mitigating Water Challenges in Overseas Projects

For overseas projects, where water shortages and interruptions are common, we conduct thorough risk assessments in advance. As needed, we install water tanks and filtration equipment. We have expertise in setting up water supply systems through external contractors who own water trucks. In the Middle East, we employ valves to efficiently manage water flow and conserve this precious resource.



# ASIA

TOA CORPORATION continues to contribute to the sustainable development of the Asian region, not only to countries where we had construction involvements, but it is our aim to reach more areas to share our reputable construction experience. As a matter of fact, we opened our Bangladesh Office in 2020 and up to this day, it keeps on engaging in economic development projects focusing on long-term integration for the progress of national economy.

BY THE NUMBERS  
SINCE  
**1963 365 15**  
PROJECTS COUNTRIES



2022 | SINGAPORE

## Tuas Container Terminal Berths C3-C8 and Stacking Yards

PSA CORPORATION LIMITED

TOA CORPORATION has successfully completed this project of **constructing six (6) container berths of over 180 hectares** in the Tuas area in Singapore. This project is part of the many phases of PSA's Mega Port Terminal project, aimed to be completed by 2040 and is set to be the world's largest automated container port with a projection of an annual handling capacity of 65 million TEUs.



2009 | PHILIPPINES

## Subic Bay Port Development

SUBIC BAY METROPOLITAN AUTHORITY



2012 | INDONESIA

## Jakarta Fishing Port Rehabilitation and Improvement

MINISTRY OF MARINE AFFAIRS AND FISHERIES





**190hectares** of land development  
work by TOA CORPORATION

PRESENT | BANGLADESH

## Bangladesh Special Economic Zone (BSEZ) Development Project Stage 1 in Phase 1

BANGLADESH ECONOMIC  
ZONE AUTHORITY (BEZA)

### LAND DEVELOPMENT

Through the developed land  
by TOA CORPORATION, BSEZ  
offers **190ha of space**  
*for Manufacturing companies*  
*to secure its piece & lay*  
*the foundation for growth.*

### CIVIL WORKS

TOA, through the JICA ODA loan,  
has been doing civil works in  
the vast **reclaimed land with**  
**1.5m high perimeter**  
**embankment on 4.0m high**  
**landfill to prevent flooding.**

### SUSTAINABLE GROWTH

This project of developing the  
BSEZ aligns with the SDGs:  
**contribution to economic**  
**growth (Goal 8),**  
**innovation (Goal 9), and**  
**global partnerships (Goal 17).**



2007 | TAIWAN

### Northern LNG Receiving Terminal

CPC CORPORATION



2008 | MALAYSIA

### Deep Water Oil Terminal Pier Project

PENGERANG IND. TERMINALS SDN BHD



2013 | VIETNAM

### Cai Mep International Container Terminal

PROJECT MGT. UNIT 85, MINISTRY OF TRANSPORT



# AFRICA

In Africa, majority of projects we have accomplished were ports and harbors. TOA CORPORATION will live its commitment to contribute to the development of the African region by furtherly participating in various infrastructure projects, guaranteed to deliver quality service and excellence in our works.

## BY THE NUMBERS

SINCE

# 1977 47 16

PROJECTS COUNTRIES

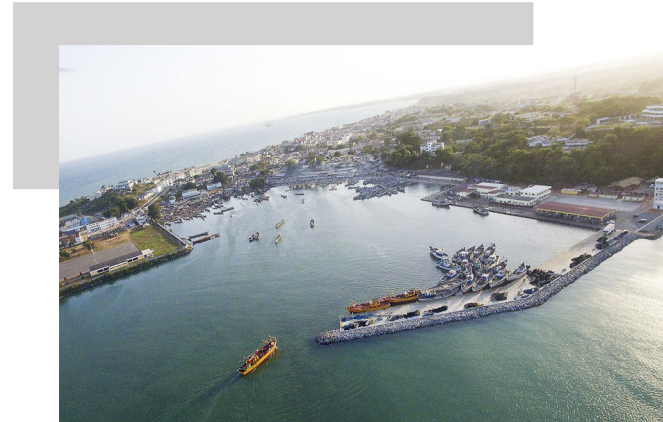


2023 | MOZAMBIQUE

## Development of Nacala Port Phase I/II

MINISTRY OF TRANSPORT AND COMMUNICATION

The construction project for the Nacala Port Development Project has been successfully completed with the **construction of various Port Facilities, including wharf, revetment, bypass road and container yard pavement**. Repair works for the port road pavement has also been done. Building facilities were also provided, as well as utilities.



2018 | GHANA

## Project for Fisheries Promotion in Sekondi

PORTS AND HARBORS AUTHORITY



2022 | SENEGAL

## Project for the Rehabilitation of the Third Wharf in Dakar Port

DAKAR PORT AUTHORITY

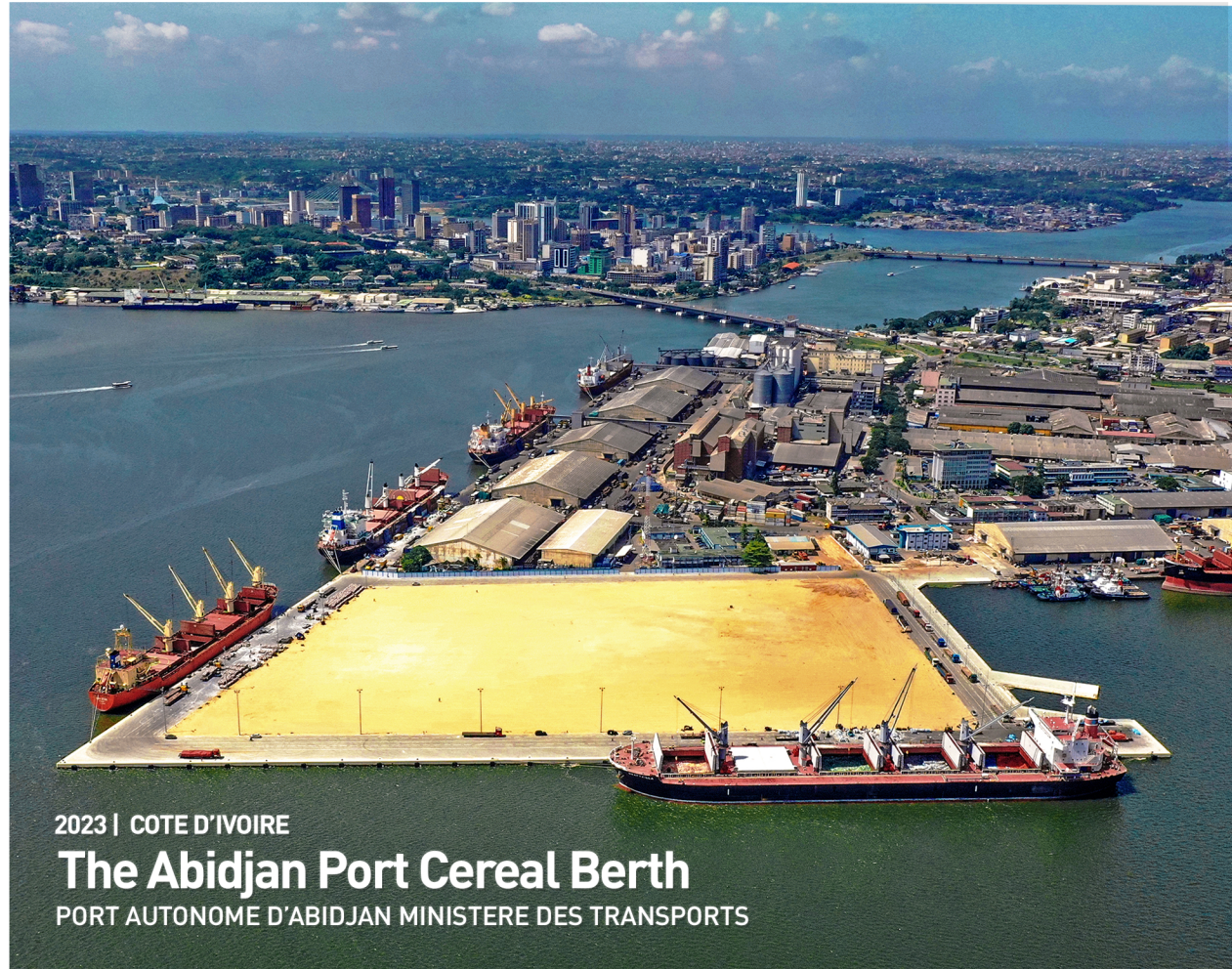




PRESENT | ANGOLA  
**Comprehensive Development of Namibe Bay**  
 INSTITUTE OF MARITIME AND PORTS, MINISTRY OF TRANSPORT



2019 | TOGO  
**Improvement of Fishing Port in Lome**  
 MINISTRY OF AGRICULTURE, LIVESTOCK AND HYDRAULIC



2023 | COTE D'IVOIRE  
**The Abidjan Port Cereal Berth**  
 PORT AUTONOME D'ABIDJAN MINISTRE DES TRANSPORTS

The constructed new cereal berth at the port of Abidjan functions as the gateway to West Africa to meet the growing demand for grains such as rice in Burkina Faso and Mali, as well as other landlocked countries in region. Works done consist of **est. 10ha of dredging and reclamation, a 1,000m quay wall and a harbor master facility.**





2020 | KUWAIT

## Maritime Traffic Coordination Center

US ARMY CORPS OF ENGINEERS,  
MIDDLE EAST DISTRICT

A **Design-Build Project** awarded to TOA CORPORATION in the year 2015, the Maritime Traffic Coordination Center (MTCC) has since become an important aid to navigation. MTCC acts as a lighthouse and serves to provide navigational assistance and security to ships.



2008 | U. A. E.

## The World Project

NAKHEEL-VAN OORD GULF SIZE

Development of The World Project adds over **232km of new beachfront to Dubai's coastline**, offering investors opportunities in the form of leisure, residential and tourism developments.

# MIDDLE EAST

Middle East is also one of the areas where TOA CORPORATION was able to establish its presence in terms of civil works projects. Since then, we have been carrying out our expertise in the region with works such as Construction of Ports and Harbors, Dredging Works, and Reclamation Works.

## BY THE NUMBERS

SINCE

**1973 126 7**

PROJECTS

COUNTRIES



1982 | SAUDI ARABIA

## Al-Jubail Desalination Plant

SALINE WATER  
CONVERSION  
CORPORATION



2015 | UNITED ARAB EMIRATES

## T3-Q10 Container Terminal (Jebel Ali)

DP WORLD UAE REGION FZE



2022 | KUWAIT

## Kuwait Naval Base Port Rehabilitation

US ARMY CORPS OF ENGINEERS,  
MIDDLE EAST DISTRICT



1990 | IRAQ

## Khor Al-Zubair Port Phase 2

MINISTRY OF COMMUNICATION



# OCEANIA

## BY THE NUMBERS

SINCE

# 1989 15 8

PROJECTS COUNTRIES

With its work achievements internationally, advanced technologies and accumulated expertise, TOA CORPORATION has earned a reputation and made its mark as a reliable contractor of maritime construction and general engineering in the region of Oceania.

2016 | SOLOMON

### Improvement of Honiara Port Facilities

MINISTRY OF INFRASTRUCTURE DEVELOPMENT

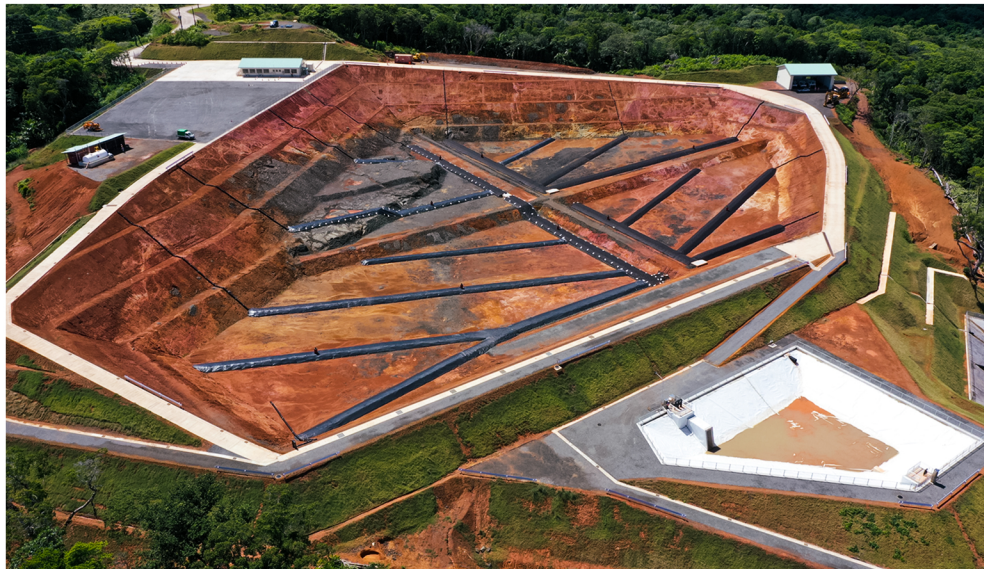


2020 | PALAU

### Palau Waste Disposal Site

MINISTRY OF PUBLIC  
INFRASTRUCTURE,  
INDUSTRIES & COMMERCE

The **semi-aerobic waste disposal system** was employed by TOA CORPORATION for this project. The said method involves the **installation of perforated collection pipes along with vertical perforated gas venting pipes at the bottom of the landfill** in order to quickly remove waste water from waste materials.



2018 | TONGA

### Upgrading of Wharf of Nuku'alofa Port

MINISTRY OF INFRASTRUCTURE AND TOURISM



Beyond the aforementioned areas, TOA CORPORATION continues to excel and establish its reputation as a reliable maritime and general engineering contractor with its wide-ranging experience in developing the countries in Latin America region.

## BY THE NUMBERS

SINCE

1988 29 8

PROJECTS COUNTRIES

2008 | EL SALVADOR

### La Union Port Development Project

COMISION EJECUTIVA PORTUARIA AUTONOMA



2002 | DOMINICA

### Coastal Fisheries Development & Expansion

MINISTRY OF AGRICULTURE AND ENVIRONMENT



2011 | GRENADA

### Coastal Fisheries Development Project - Phase II

MINISTRY OF AGRICULTURE, FORESTRY AND FISHERIES

TOA successfully executed **foundation, reinforcement and concrete works, as well as exterior and interior finishes** in constructing facilities in Gouyave's fishermen site which include the **Fishermen's centers and lockers as well as a prefabricated cold storage facility.**



# OUR MAJOR FIELD OF WORKS

2017 | SINGAPORE

## Pasir Panjang Terminal, Phase III & IV Container Terminal Project

PSA CORPORATION LIMITED



Photo credit to PSA Singapore

*Continuing to expand as a*

# GENERAL CIVIL ENGINEERING COMPANY

*is our passion*

As the world's largest container transshipment hub, PSA Singapore handles millions of containers every year, bound for every corner of the world. As part of PSA's continued growth in Singapore, **15 berths were commissioned at Pasir Panjang Terminal in the past decade and TOA CORPORATION built 12 of these.**



# MARINE CIVIL ENGINEERING

PRESENT | INDONESIA

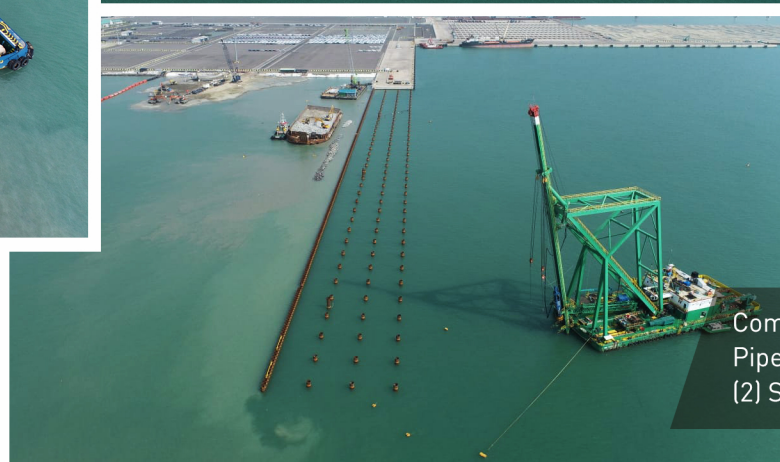
## Patimban Port Development Project Phase II, Package 5: Car Terminal Construction

MINISTRY OF TRANSPORTATION



The TOA vessel "TOTRA III" in operation of receiving fractured dredging soil for pneumatic pumping operation.

After completion, this will be Indonesia's largest new port located in Subang Province, east of Jakarta City. Following Phase 1, this phase aims to **increase the efficiency of distribution functions at Patimban Port by expanding the car terminal area.** Among the many features of the project is **utilizing advanced Japanese technology to improve the soil and reclaim soft ground.**



Completion of piling works: [1] Steel Pipe Sheet Pile (SPSP): 304 nos and; [2] Steel Pipe Piles (SPP) 114 nos.



2019 | VANUATU

## The Port Vila Lapetasi International Wharf Development Project

MINISTRY OF INFRASTRUCTURE  
AND PUBLIC UTILITIES

A **development project to improve the port facility to become an international multipurpose wharf** was successfully completed in February 2019 to handle the rapid increase in cargo volumes due to the growing economy of the South Pacific nation of the Republic of Vanuatu. At an eastward location 500m from the current harbor, **a new quay of 200m length was constructed to a depth of 12.3m below sea level, catering both to cargo ships and cruise ships.**



2001 | SINGAPORE

## Punggol North Eastern Coast Development

HOUSING & DEVELOPMENT BOARD



2014 | KIRIBATI

## Expansion of Betio Port

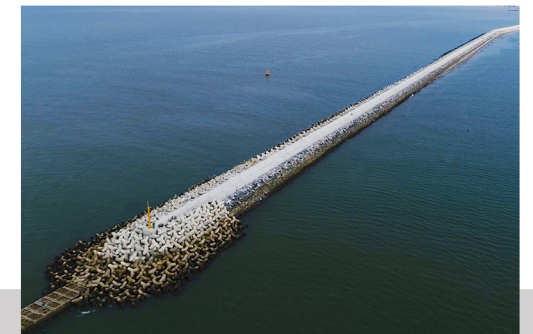
MINISTRY OF COMMUNICATIONS,  
TRANSPORT & TOURISM DEVELOPMENT



2019 | VIETNAM

## Lach Huyen Port Infrastructure Project

VINAMARINE, MINISTRY OF TRANSPORT



2020 | VIETNAM

## Lach Huyen Port Infrastructure Pkg. 10

VINAMARINE, MINISTRY OF TRANSPORT



A great deal of our work entails the

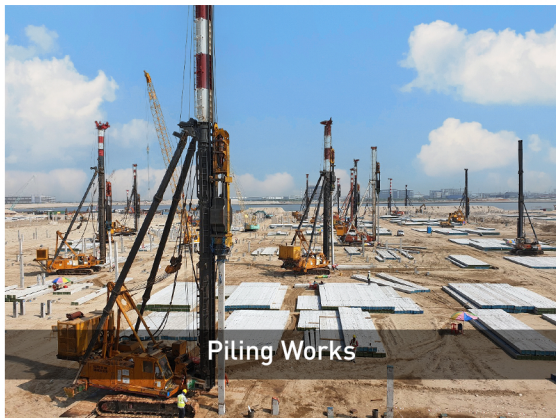
# ***Construction of Container Terminals***

PRESENT | SINGAPORE

## **Construction of Container Berths T211-T215 and Stacking Yards at Tuas Terminal Finger 2**

PSA CORPORATION LIMITED

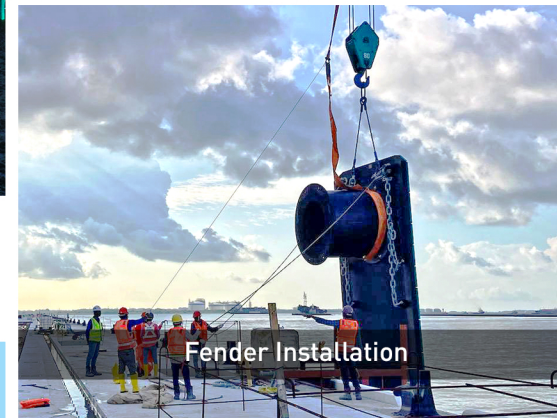
This project encompasses a range of design and build services, such as **construction of stacking yards with piling works, wharf decks on existing caisson berths, Substations with M&E and communication works, installing a crane rail system for quay and yard cranes, road services, fire-fighting services and lightning protection system.**



Piling Works



Pavement Works



Fender Installation





# ROAD AND TRANSPORT ENGINEERING

PRESENT | BANGLADESH

## Bangabandhu Sheikh Mujib Railway Bridge Construction Project: Eastern Part

BANGLADESH RAILWAY, MINISTRY OF RAILWAYS



2007 | PHILIPPINES

## Second Magsaysay Bridge and Butuan City Bypass Road

DEPARTMENT OF PUBLIC WORKS AND HIGHWAYS

As a result of the constructed new bridge and a bypass road at the crossing point of the Agusan River on the Butuan-Cagayan de Oro-Iligan Road in Butuan City, **TOA CORPORATION successfully contributed on alleviating traffic congestion in the city** and has since facilitated smooth transportation flow between major cities in northeast Mindanao, Philippines. **The said bridge and the bypass road has a total span of 882m and 1.3km, respectively.**





2007 | PHILIPPINES

## Coastal Road in Southern Cebu

DEPARTMENT OF PUBLIC WORKS AND HIGHWAYS

Back in the year 2002, Cebu City in the Philippines has faced urgent needs for construction projects of roads and urban infrastructural facilities. TOA CORPORATION has contributed to this development with the completion of coastal road along the shoreline of the south bay in Cebu City by year 2007.

***This road spans at approx. 5,000m with a total area of about 113,000sqm.*** Embankment works were performed on the sea for improvement of the foundation and ***TOA CORPORATION applied its advanced marine civil engineering technology known as the Paper Drain Method.***



2020 | JAPAN

## Sugo Smart Interchange

EAST NIPPON EXPRESSWAY COMPANY LIMITED



2020 | JAPAN

## National Route 45 Sakanoshita-ku Road Improvement

TOHOKU DEVELOPMENT  
BUREAU, MINISTRY OF LAND  
INFRASTRUCTURE, TRANSPORT  
AND TOURISM





2021 | CAMBODIA

## Flood Protection and Drainage Improvement

PHNOM PENH CAPITAL ADMINISTRATION

Improvements to the drainage system in Wat Phnom Daun Penh and Tuol Kork, in Phnom Penh, Cambodia, have been contributing to the reduction of flooding caused by rain in the region, **reducing the duration of prolonged flooding, and contributing to improving public hygiene.** This project, which is a grant aid from the Government of Japan, is intended to **increase the capacity of rainwater pipes buried under existing roads to reduce flooding time and area.** TOA CORPORATION was successful on applying the **method of Pipe Jacking on laying out the new rainwater pipe which has a span of about 13km (est. 8km in Wat Phnom and est. 5km in Tuol Kork)** together with an underground water tank. A **pumping station was also constructed on the river side** and two drainage pump trucks were included as procured items.



2008 | PHILIPPINES

## Agno River Flood Control Project - Phase II

DEPARTMENT OF PUBLIC WORKS  
AND HIGHWAYS

# ENVIRONMENTAL INFRASTRUCTURE ENGINEERING



2013 | INDONESIA

## Denpasar Sewerage Development

MINISTRY OF PUBLIC WORKS  
SPATIAL PLANNING SECTION

In response to growing concerns about wastewater pollution affecting rivers and drainage ditches in Southern Bali, Indonesia, TOA proactively addressed this environmental challenge. We successfully **constructed an approximately 2.6km long sewerage network, installed emergency power generators, pumping stations, and aerators, and established a sludge drying bed and storage facility.** These vital infrastructure improvements contribute significantly to safeguarding the local ecosystem in the area.



2010 | VIETNAM

## Ho Chi Minh City Water Environment Improvement

PEOPLE'S COMMITTEE OF HO CHI MINH CITY

As part of an ODA loan initiative aimed at enhancing water quality, a project was undertaken in Ho Chi Minh, Vietnam, to improve a river in the central area. The project involved **dredging approximately 2km of the river** running through the city center, resulting in an **estimated volume of 403,000m<sup>3</sup> of sediment removal**. Additionally, the river embankment received **reinforcement measures, including the planting of vegetation and installation of lighting fixtures**. In total, about **1,510m of embankment were strengthened**, creating a more resilient riverfront.



# LOGISTICS & PRODUCTION FACILITIES



2019 | VIETNAM

## Fujitrans Motorpool Project

FUJITRANS VIETNAM CO., LTD.

[Site Floor Space] est. 26,600sqm.

[Building Floor Area] est. 900qm.

2016 | INDONESIA

## Fujitrans Logistics Packaging Warehouse

P.T. FUJITRANS LOGISTICS INDONESIA

[Floor Area] est. 40,000sqm.

[Structural Type] Steel Structure



2021 | VIETNAM

## Hazardous Goods Warehouse

NRS-RAIZA LOGISTICS VIETNAM

[Floor Area] est. 2,000sqm.

[Structural Type] Reinforced Concrete Structure



2017 | VIETNAM

## ISUZU Vietnam Auto Care Center

ISUZU VIETNAM CO., LTD.

[Floor Area] est. 2,000sqm.

[Structural Type] S-beam to RC-column Hybrid Structure





2013 | THAILAND

## Thai Yokorei Wangnoi Distribution Center

THAI-YOKOREI COMPANY LTD.

Thailand's demand for quality food is on the rise, making this cold storage project essential for food preservation. **An est. 22,000sqm. of floor space is available in this 3-storey warehouse, built with RC-structure that allows for 2,800ton capacity.**

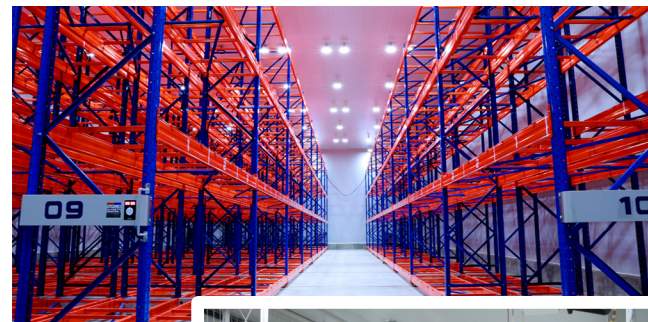


2022 | VIETNAM

## Cool Japan CLK Vietnam Cold Storage Warehouse

CLK COLD STORAGE CO., LTD.

After successfully completing the design and construction of CLK's refrigerated warehouse, TOA also undertook an expansion project in response to the growing demand for food preservation facilities in Vietnam. The expansion resulted in an **additional floor area of approx. 1,800sqm. and increased capacity by approx. 2,800tons (compared to the original floor area of approx. 9,800sqm. and capacity of approx. 14,000tons)**. The constructed warehouse features a **steel-frame structure**.





2014 | INDONESIA

## Mitsuyoshi Manufacturing Pressing Machine Factory

PT. MITSUYOSHI MANUFACTURING INDONESIA



[Floor Area] est. 5,200sqm.



[Floor Area] est. 21,000sqm.  
(includes the Factory, Material Warehouse and Product Storage)

PRESENT | VIETNAM

## Tuyen Quang Pellet Factory

EREX VIETNAM FACTORY LTD.



PRESENT | BANGLADESH

## SINGER Home Appliance Plant Factory

SINGER BANGLADESH LTD.

Construction of SINGER Bangladesh Plant Factory with **floor area of approximately 80,000sqm.** consists of various building types: **Warehouse Building with Mezzanine, Production Building, Office Building, Utility Building, and others.** The various building facilities is being built with **steel and reinforced cement concrete (RCC) structure**, with appropriate pile systems where necessary.





# ARCHITECTURAL BUILDING WORKS



2017 | VIETNAM  
**KN Lotus Cam Ranh Resort**  
KN CAM RANH COMPANY LTD.

[Floor Area] est. 16,500sqm.



2019 | INDONESIA  
**Bali Theater Hall**  
MINISTRY OF PUBLIC WORKS, SPATIAL PLANNING SECT.  
With a total floor area of approx. **19,000sqm.**, the Bali Theater Hall boasts a **2,600 seating capacity and built with Reinforced Concrete (RC) structure.**



## OUR HARBOUR BUILDING PROJECTS



2018 | TONGA  
**Passenger Terminal Building at Fuaa Wharf**  
MINISTRY OF INFRASTRUCTURE & TOURISM

[Floor Area] est. 2,900sqm.



2005 | SINGAPORE  
**Ferry Terminal Building at Marina South Pier**  
HOUSING AND DEVELOPMENT BOARD

[Floor Area] est. 5,700sqm.



PT TOA TUNAS JAYA  
INDONESIA

### Building Together: TOA's Collaborative Venture in Indonesia

TOA CORPORATION and PT. Tunas Jaya Sanur (originated in Bali) have jointly established "**PT TOA TUNAS JAYA INDONESIA**" aiming to move forward and contribute to further development of Indonesia.



# LNG TERMINALS

2007 | CIS

## Sakhalin II LNG Terminal

SAKHALIN ENERGY INVESTMENT COMPANY LTD. (SEIC)

TOA played a crucial role in this project, overseeing the **construction of the LNG and Oil Terminal and performing jetty works**. TOA was responsible for **installing 25 reinforced concrete caissons, carrying out foundation works for the oil export terminal and providing concrete supply for other contractors involved**. The project is an impressive endeavor, with three large offshore platforms, extensive subsea pipelines, and one of the world's largest LNG plants.



2011 | MEXICO

## Manzanillo LNG Terminal Project

TERMINAL KMS DE GNL



2007 | TAIWAN

## Northern LNG Receiving Terminal

CPC CORPORATION



*Great care was taken in the construction of the jetty to preserve the environment as the feeding and breeding grounds of many fish and marine creatures were in close proximity to the project site.*



*\*Above images of Sakhalin II LNG Terminal are credited to SEIC*



# POWER PLANTS



2018 | VIETNAM

## Thai Binh Thermal Power Plant (2x300MW)

VIETNAM ELECTRCITY-MARBUNI CORPORATION

As a result of the construction of the new coal-fired thermal power plant in Thai Binh Province and the related transmission network, this project has addressed the increasing power demand in the north of the country, and has provided a stable power supply to support socioeconomic development. TOA CORPORATION performed **soil improvement works by PVD, constructed the turbine building, and conducted foundation works and jetty works.**



2009 | VIETNAM

## O Mon Thermal Power Plant (1x300 MW)

MITSUBISHI HEAVY INDUSTRIES LTD.



2022 | INDONESIA

## Central Java Coal Fired Power Plant (2x1000 MW)

PT BHIMASENA POWER INDONESIA



2012 | INDONESIA

## Paiton Private Power Plant III (815 MW)

PT PAITON ENERGY

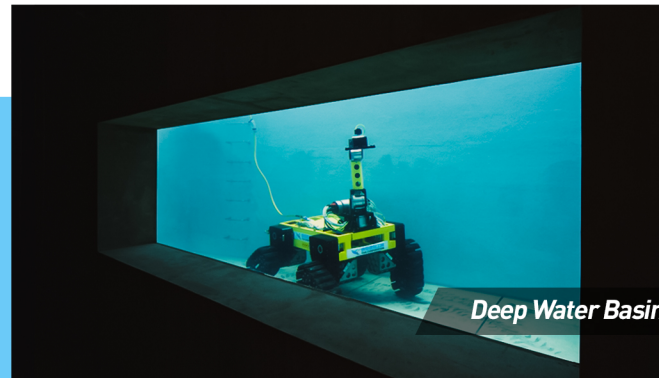


# TRDC

## TOA Research and Development Center



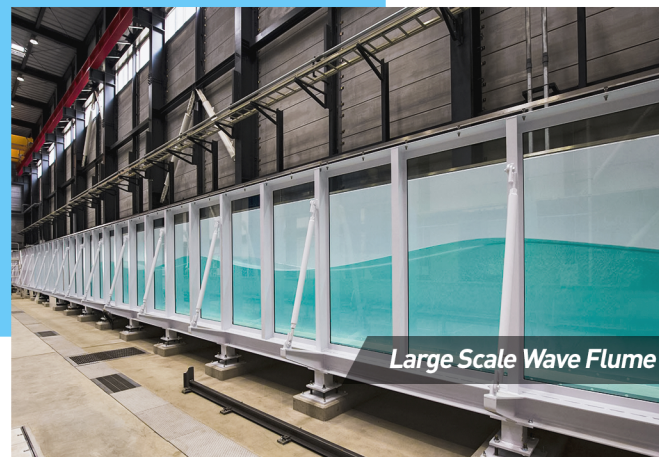
Large Scale Loading Test Equipment



Deep Water Basin



Severe Environment Reproducing Chamber



Large Scale Wave Flume

## Challenging New Social Issues with TOA's Unique Innovation

Our mission involved in infrastructure development is to respond to the ever-changing societal issues. In recent years, realization of the 2050 carbon neutrality, disaster prevention, mitigation, and national resilience have become major issues. Particularly, countermeasures against large-scale disasters, such as high waves, storm surges, sea level rise, earthquakes, tsunamis, and climate change, have become critical problems. Furthermore, it is also vital to counteract infrastructure aging and promote digital transformation (DX).

The TRDC, which serves as the foundation of TOA's technology, embodies our commitment to sustainability. By continually activating our R&D capabilities, we aim to determine a clear path to become a company that provides sustainable solutions to combat our societal problems.



# Seeking Greater Heights for Future of R&D

Since Fiscal Year 2014, the Company has been developing the TOA Research and Development Center in Anzen-cho, Tsurumi-ku, Yokohama, the cradle of TOA. This project included a significant renovation of facilities that had been in place since the 1970's, along with the addition of new bio-environmental facilities and large multipurpose experimental spaces. In March 2023, we finally unveiled the completion of new experimental buildings Building 2 and Building 3. **This expansion serves as a hub for innovation to advance our existing research efforts and expand into new business areas.**



**Building 2** combines steel and wood, with wood used for the entrance and office interiors to reduce CO2 emissions during construction. **The facility achieved an impressive 112% reduction in energy consumption** by improving exterior wall performance and adopting high-efficiency air conditioners. **Solar power generation (130kW) enabled virtually zero energy consumption, leading to ZEB certification in September 2023.**



**Building 3** is a steel structure with two floors, covering a total floor area of 552sqm. Its height stands at approximately 12.2m. The first floor will accommodate biological and architectural laboratories, while the second floor will house offices. Similar to Building 2, **it has been thoughtfully designed with considerations for environmental sustainability.** The interior incorporates wood, and solar panels have also been installed to reduce CO2 emissions during its operation.



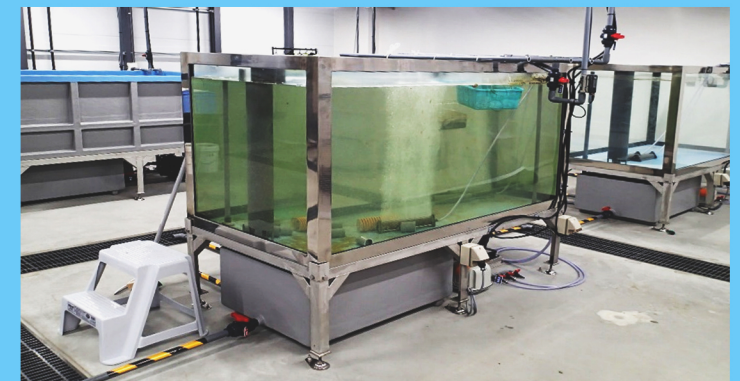
## ZEB Certification Net Zero Energy Bldg.

Third-party certification plate notified by the Ministry of Land, Infrastructure, Transport & Tourism, Japan. Issued by the Urban Housing Evaluation Center.

### TRDC's New Experimental and Research Facility

## Biological and Environmental Laboratory: Water Tank for Biological Plant Experiments

A new facility established in the first floor of the new Building 3 is now poised to advance research and development, contributing to blue infrastructure and biodiversity.





# KAKURYU

*Piling Barge and Floating Crane*

Designed with our newly developed  
Energy Regeneration System that  
reduces CO2 emission from the  
work vessel.

## OUR MAJOR OFFSHORE EQUIPMENT

More of our vessels  
by scanning the  
following QR code

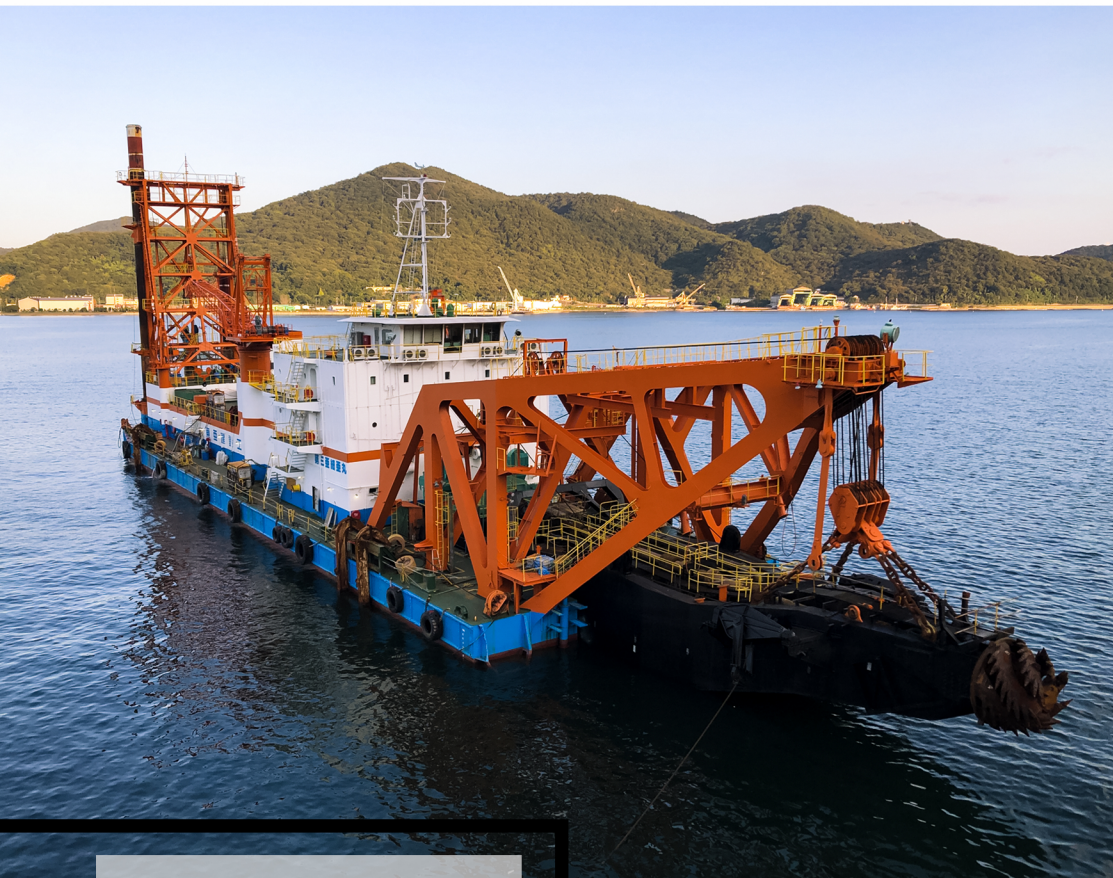


### Key Specifications

**[Length of Leader]** 80 m  
**[Lifting Capacity]** 600 ton  
**[Max. Angle of Raker Leader ]**  $\pm 25$ -deg  
**[Drivable Diam. of Pile]** 600-2500 mm







# ASIA MARU NO. 3

## Key Specifications

**[Total Installed Power]** 11,560 kW  
**[Dredge Pump]** 6,600 kW  
**[Max. Dredging depth]** 25 m  
**[Dredging Capacity]** Reaching 2,200 m<sup>3</sup>/h



# KOUKAKU

*Cement Deep Mixing Vessel*

## Key Specifications

**[Whole Engine Output]** 4,408 kW  
**[Processing Power]** > 90 m<sup>3</sup>/hr  
**[Unit Improve Area]** 5.47 m<sup>2</sup>  
**[Improvement Depth]** 52 m below water



# KAISHUU

*Trailer Suction Hopper Dredger*

## Key Specifications

**[Full Speed]** 15.6 kt  
**[Mud Hold Capacity]** 16,500 m<sup>3</sup>  
**[Max. Dredging depth]** 48 m  
**[Dredging Capacity]** Reaching 6,200 m<sup>3</sup>/h



# CREATE VALUE BUILD THE FUTURE

*Build a prosperous society and connect  
all people in the world for a better future*



Head Office / International General Headquarters

3-7-1, Nishi-Shinjuku, Shinjuku-ku, Tokyo, 163-1031 Japan

Tel: +81-3-6367-0801 Fax: +81-3-6367-0809

<https://www.toa-const.co.jp/eng/>

## Overseas Office

### SINGAPORE – Singapore Office

2 Venture Drive, Vision Exchange  
#19-01/08 Singapore 608526  
Tel: +65-6775-5044  
Fax: +65-6775-3542

### PHILIPPINES – Philippine Office

4F CJV Building, 108 Aguirre St.  
Legaspi Village, Makati City  
Tel: +63-2-8-9320623

### BANGLADESH – Bangladesh Office

Concord Baksh Tower, 6th Floor, Unit 6A,  
Plot No. 11A, Road No. 48, Block-CWN,  
Kemal Ataturk Ave., Gulshan-2, Dhaka-1212  
Tel: +880-18-9645-9111

### ANGOLA – Namibe Office

Comdominio MARILIANA No.8, Bairro Torre de  
Tombo, Zana da Praia Amelia, Mocamedes,  
Provincia do Namibe, Republic of Angola

### EAST AFRICA – Kenya Office

Cement Silos Road, Plot No. 799,  
Section 1, Mainland North, Waura House,  
Mombasa, Kenya

### INDONESIA – Indonesia Office

RAJAWALI PLACE, 21st Floor, Unit B-1  
Jl. HR. Rasuna Said Kav B-4, Kuningan,  
Setiabudi, Jakarta Selatan 12910  
Tel: +62-21-3970-5763 Fax: +62-21-3970-5767

### VIETNAM – Hanoi Office

The West Building, 12B Floor, 265 Cau Giay Street,  
Dich Vong Ward, Car Giay District, Hanoi, Vietnam  
Tel: +84-24-3826-2606 Fax: +84-24-3826-2628

### KUWAIT – Kuwait Office

Tala Center, Salem Nubarak St. Salmia Block 4  
Mezzanine Floor, Office No. 1 Safat 13083,  
State of Kuwait  
Tel: +965-6700-3324

### MIDDLE EAST – Dubai Office

Office 811, Makateb Building, Port Saeed  
Deira, Dubai, UAE PO Box 33868  
Tel: +971-4-396-8777

### WEST AFRICA – Cote d'Ivoire Office

Port d'Abidjan, Site de la Capitainerie,  
Abidjan, Republique de Côte d'Ivoire  
Tel: +225-07-69-69-57-57

## Overseas Subsidiaries

### PHILIPPINES – TOA (Phils.), Inc.

One San Miguel Avenue Condominium, No.1  
San Miguel Avenue cor. Shaw Boulevard,  
Ortigas Center, Pasig City 1605, Philippines  
Tel: +63-2-718-3068 Fax: +63-2-718-3071

### INDONESIA – PT TOA Tunas Jaya Indonesia

RAJAWALI PLACE, 21st Floor, Unit B-1  
Jl. HR. Rasuna Said Kav B-4, Kuningan,  
Setiabudi, Jakarta Selatan 12910  
Tel: +62-(0)21-3970 5765

### LUXEMBOURG – TOA (Lux) S.A.

4, Rue Henri Schandt, L-2530 Luxembourg  
Tel: +352-403727 Fax: +352-403723